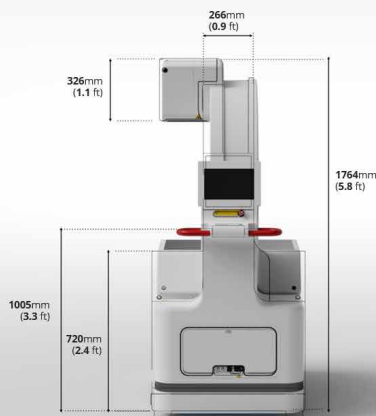
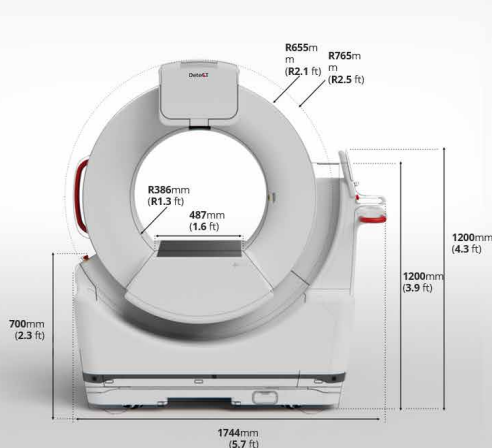


DeteCT Vet Mobile Hybrid 3-in-1 CBCT



DeteCT Vet Features



Pulsed FLO and CT to reduce patient exposure



Mobile | Wheels | Remote Control



Bore Diameter: 30" (77.2cm)



Dimensions: 68.5" x 31.5" x 69.3"
(174 x 80 x 176 cm)



For Large Companion Animals



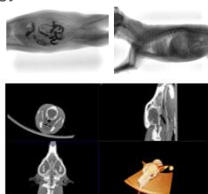
Power Input: 220V 15A
Power Output: 10kW Rad/4.8kW CT



Scan Speed: 20s

ExamVue CT Suite Software

Built on JPI's ExamVue Duo Software, ExamVue CT Suite is the main operating software for the DeteCT Vet system. The software is designed to provide the image acquisition, image processing, hardware integration, and operational management functions for radiologists and radiology technicians.



The software saves the digital X-ray images acquired in the Radiography, Fluoroscopy or Computed Tomography mode and processes the acquired image to achieve the best image quality. The software also manages patient information and store diagnostic images in an internal database.

ExamVue CT Suite Software supports DICOM 3.0 protocol which allows compatibility with the network programs such as PACS and PMS.

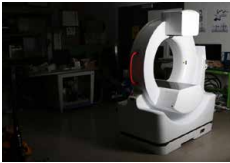
Contact us:

3555 Veterans Memorial Hwy, Unit D
Ronkonkoma, NY 11779
sales@jpihealthcare.com
(516) 513-1330 Ext. 3



www.jpianimalhealth.com/detect-vet

TECHNICAL SPECIFICATIONS



DeteCT Vet	Value
Output Power	
RAD	10kW (Continuous)
FLO	2.3kW (Pulsed)
CT	10kW (Pulsed)
kVP	
RAD	40 ~ 120kV (1kV step)
FLO	40 ~ 115kV (1kV step)
CT	40 ~ 120kV (1kV step)
mA	
Continuous RAD	10~160mA
Pulsed FLO	1mA ~ 10mA (1mA step) 10mA ~ 20mA (2mA step)
Pulsed CT	Small : 1mA ~ 20mA Large : 1mA, 5mA ~ 100mA (5mA step)
Max. Exposure Time	
RAD	10~200ms
FLO	~10min
CT	6~20sec
Generator	
Make	IMD
Input Voltage	Single Phase (220VAC)
Maximum Power	10kW
Certificate	EN 60601-1: Class I 93/42/EEC DIRECTIVE: Class II b
X-ray Tube	
Make	IAE
Target Angle	16°
Focal Spot	0.3 / 0.6
IEC60522 Inherent Filtration	0.7 mm al eq

DeteCT Vet	Value
Detector	
Detector Technology	IGZO TFT
Pixel array	RAD : 3072 * 3072 FLO : 1x1: 3072 x 3072 (11fps) CT 2x2: 1536 x 1536 (30fps)
Scintillator	Direct Deposit CsI:TI
Pixel Pitch	140 μm
DQE	>57% at 1 lp/mm (CsI)
MTF	>77% at 0.5 lp/mm (CsI)
Lag	< 0.025% 1st frame
Dimension	460 x 460 x 15mm (18.11" x 18.11" x 0.59") Cassette Size (3.5kg or 7.7lbs)
Active Image size	427.8 x 427.8mm (16.84" x 16.84")
Bit Depth	16bit
Frames Per Second	5/10/30
Voxel Size	270 or 360 μm
Voxel Count	512 x 512 ~ 1024 x 1024 or 2048 x 2048
Reconstruction Volume	275 x 275 x 264mm (10.82" x 10.82" x 10.39")
Collimator	
Type	Fairy (RF07) Selectable Filtration (Total 4) 1. 0.5mmAL 2. 0.1mmCU 3. 0.2mmCU 4. 0.3mmCU
Additional Filtration	0.5mmAl 0.1mmCu 0.2mmCu 0.3mmCu
Inherent Filtration	1mmAl
Power Input	24VDC
Field Shape	Rectangular
Weight	4.8kg ±50g (10.58lbs ±0.11lbs)
Dimensions	110 mm (H) x 238mm (L) x 182mm (W) 4.33" (H) x 9.37" (L) x 7.16" (W)
Focal Field Size (FD 100cm/3.28ft)	Min: ≤ 2 x 2 cm (≤ 0.78" x 0.78") Max: ≥ 45 x 45 cm (≥ 17.71" x 17.71")

TECHNICAL SPECIFICATIONS



DeteCT Vet	Value
CT Body	
Dimension	<i>Internal Radius: R386mm (R 15.19")</i> <i>External Radius: R 765mm (R 30.11")</i> <i>Scanning Aperture: D 750mm (D 29.52")</i> <i>Height: 1764mm (69.44")</i> <i>Length: 1744mm (68.66")</i> <i>Width: 800mm (31.49")</i>
Gantry Rotation	0 ~ 360°
Weight	600kg (1322.77 lbs)
Input Power	
Voltage	Single Phase (220VAC)
Frequency	50/60 Hz
Power Consumption (Max)	2.2kVA
Power Consumption (Idle)	220W
Apparent Resistance	220 V ~ 0.038 Ω or less
Fuse	250V ~ T15AH 5020 Size
Software	RAD/Fluoro/3D Viewer

DeteCT Vet	Value
Environmental Condition	
Ambient Temperature (Use)	10°C - 40°C
Ambient Temperature (Storage)	-20°C - 55°C
Relative Humidity (Use)	20% - 75%
Relative Humidity (Storage)	10% - 95%
Atmospheric Pressure (Use)	700 - 1060hPA
Atmospheric Pressure (Storage)	700 - 1060hPA
Workstation	
Computer	*Subject to Change (Recommended)
CPU	i5 - 13500
GPU	RTX 3070 Ti
RAM	16GB
Storage	1st 512GB SSD, 2nd 1TB

